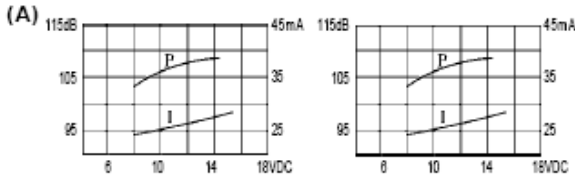


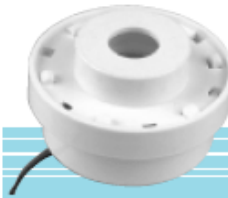
# Buzzer z gen.12V 3D3120L nr kat. 06440

## KPI-4510L series Piezo Buzzer

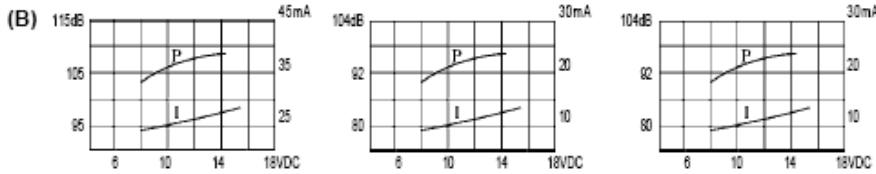
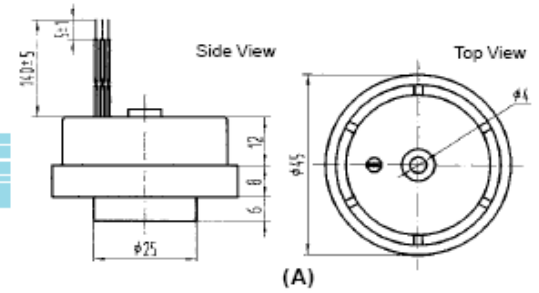
### DIMENSIONS



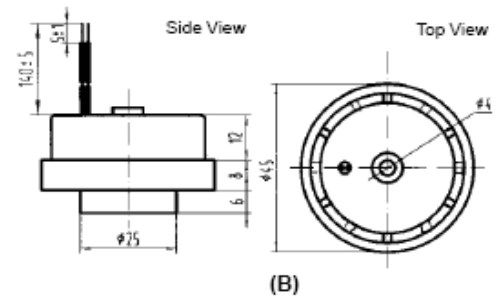
Model No	KPI-4513L	KPI-4514L
Rated Voltage	12VDC	12VDC
Operating Voltage	3~16VDC	3~16VDC
Max. Rated Current	35(20)mA at 12VDC	35(20)mA at 12VDC
Min. Sound Pressure Level	100(92)dB at 12VDC/30cm	105(92)dB at 12VDC/30cm
Resonant Frequency	3.2±0.5KHz	3.2±0.5KHz
Tone Nature	Continuous+Slow Pulse	Continuous+Fast Pulse
Operating Temperature	-20~+60joe	-20~+60joe
Weight	21g	21g



color White  
ABS Housing Material  
Lead Terminal



Model No	KPI-4510L	KPI-4511L	KPI-4512L
Rated Voltage	12VDC	12VDC	12VDC
Operating Voltage	3~16VDC	3~16VDC	3~16VDC
Max. Rated Current	35mA at 12VDC	20mA at 12VDC	20mA at 12VDC
Min. Sound Pressure Level	100dB at 12VDC/30cm	92dB at 12VDC/30cm	92dB at 12VDC/30cm
Resonant Frequency	3.2±0.5KHz	3.2±0.5KHz	3.2±0.5KHz
Tone Nature	Continuous	Slow Pulse	Fast Pulse
Operating Temperature	-20~+60joe	-20~+60joe	-20~+60joe
Weight	21g	21g	21g



all dimensions are in mm

\* Value applying at rated voltage