



# 錫麟企業有限公司 Sencera Co. Ltd.

Tel:02-27046595

Fax:886-2-27041279

Email:justinel@ms14.hinet.net

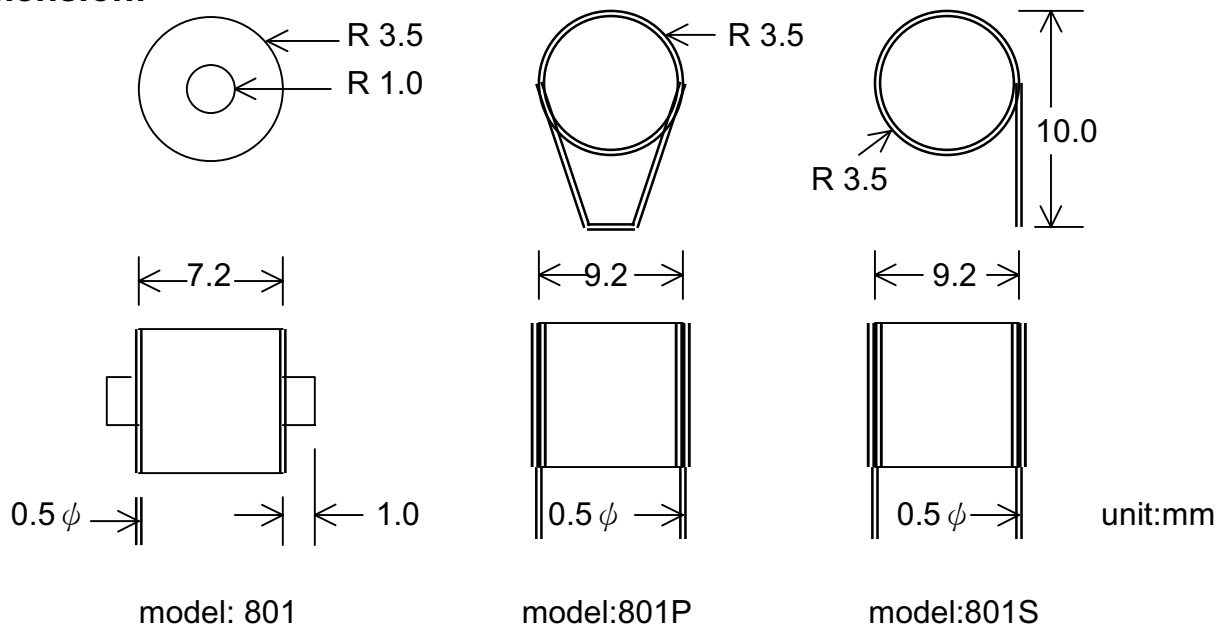
9F-5, No. 26, Jen-Ai Road, Taipei, Taiwan, ROC. <http://welcome.to/sencera>

## Shock sensor 801X specification

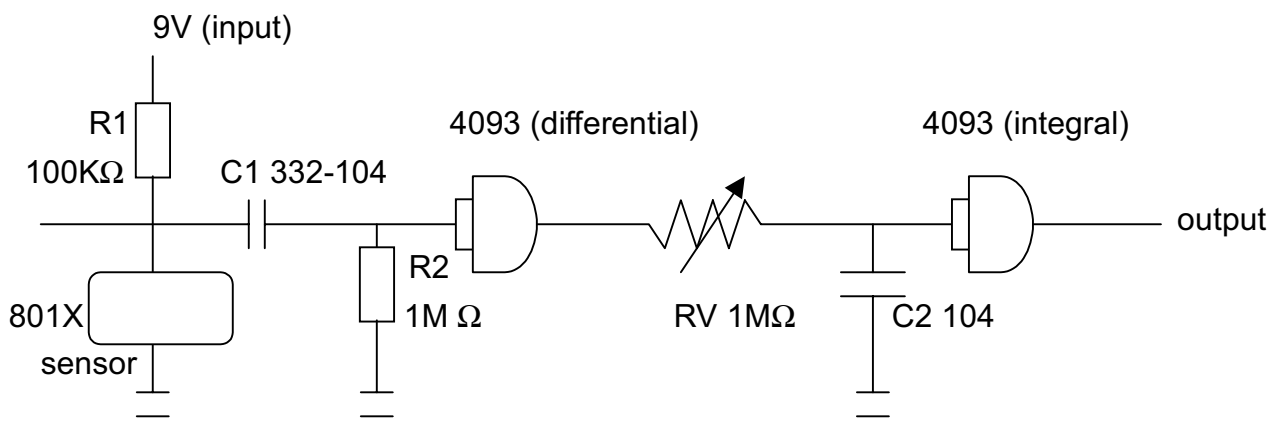
### - Features:

- Micro Shock detecting.
- Non direction limited.
- 60,000,000 times shock guarantee (special gold alloy plated)
- Low cost circuit can adjust Sensitivity.

### - Dimension:



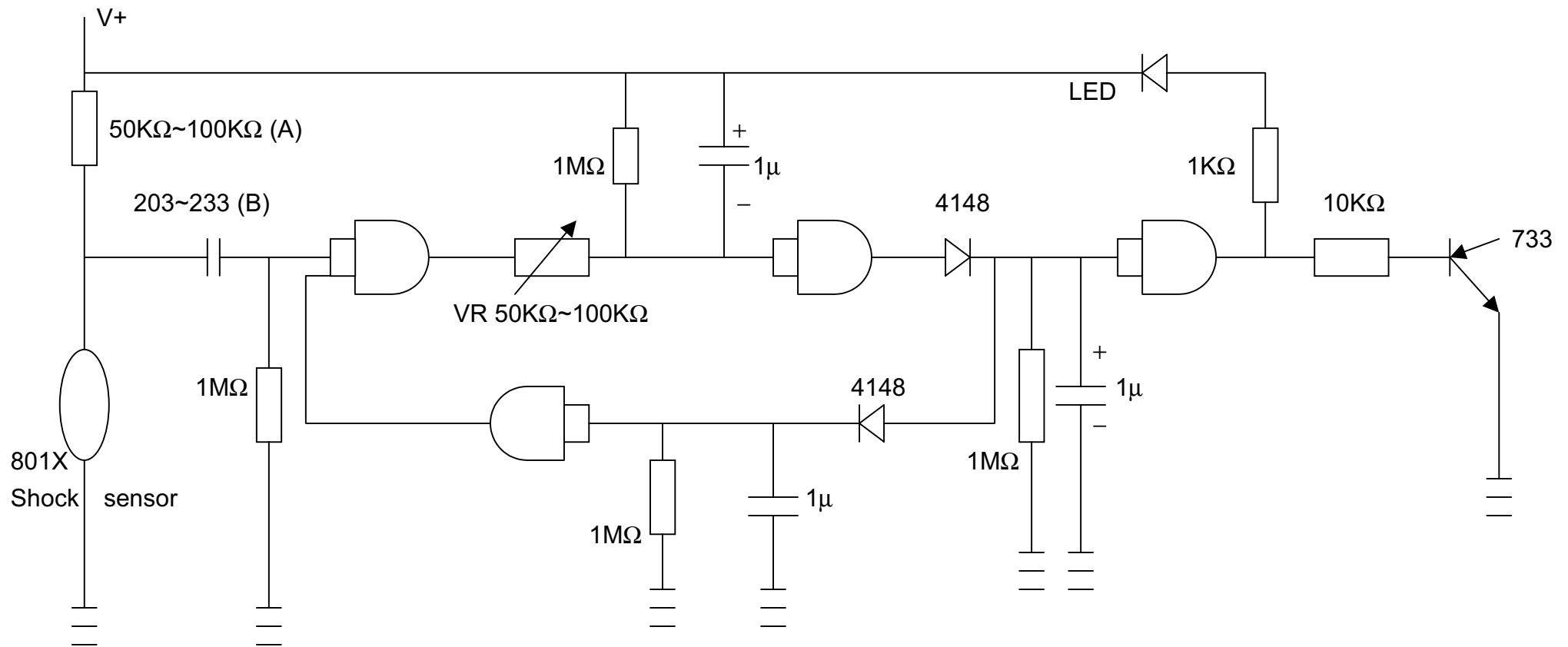
### - Reference circuit:



### - Attention:

1. Output must become **square wave**. (Can not use as shock switch!)
2. Take low or high of output square wave into your alarm system and adjust sensitivity from the delay time length.

## Reference circuit of 801X shock sensor element



Remark:

1. Use 4093 IC and Vcc=12V
2. Sensitivity can be adjusted by (A) and (B) value.