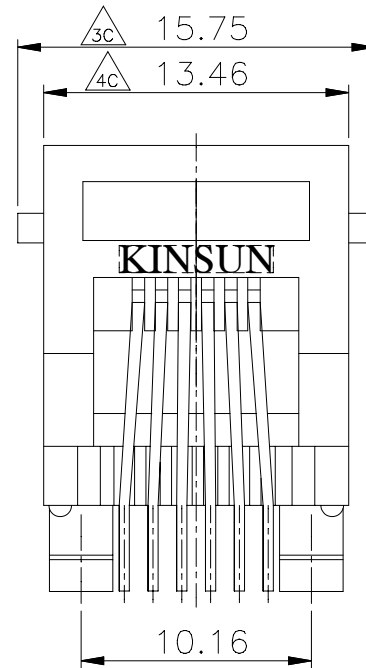
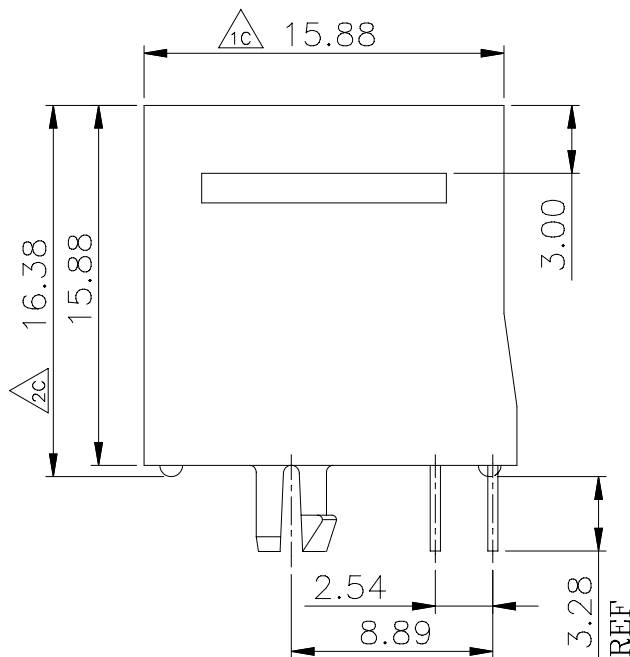
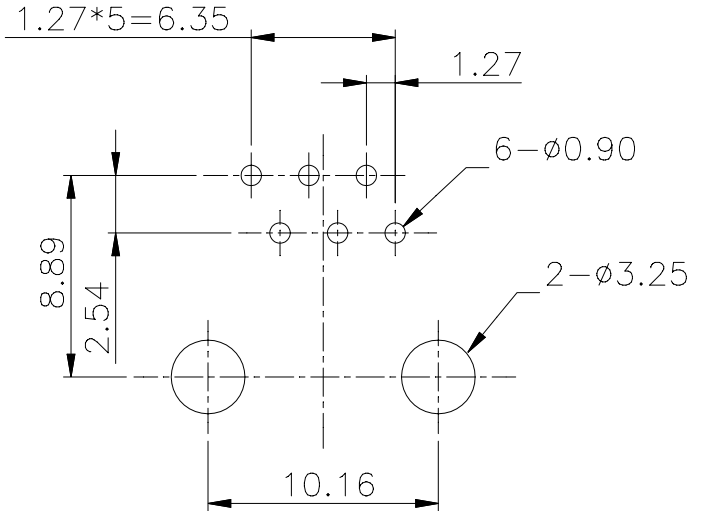
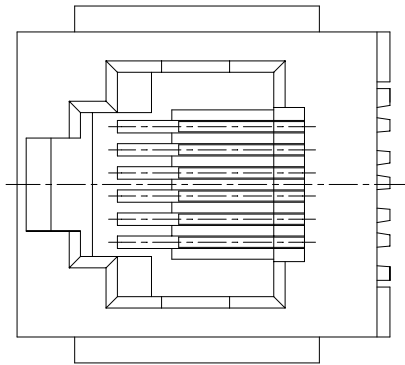


**MATERIALS:**

PLASTIC HOUSING: ENGINEERING THERMOPLASTIC  
 FLAMMABILITY RATING UL 94V-0.  
 CONTACTS: 0.46MM DIAMETER PHOSPHOR BRONZE  
 PLATING: GOLD PLATING OVER NICKEL

**PCB LAYOUT/TOP VIEW**



- 6u" P/N 3002273900
- 15u" P/N 3002274300
- 30u" P/N 3002274700
- 50u" P/N 3002275100

※凡標註  $\triangle$  記號者, 為品管檢驗之尺寸



|                            |                               |                                                                             |                                         |
|----------------------------|-------------------------------|-----------------------------------------------------------------------------|-----------------------------------------|
| 設計 DR.<br>YANG<br>93-01-13 | 核准 APPD.<br>Jerry<br>93-01-13 | 容許公差 TOLERANCE<br>.XXX ±0.10<br>.XX ±0.25<br>.X ±0.38<br>X ±0.50<br>ANG ±3° | 品名<br>ARTICLE Top Entry PCB Jack (6P6C) |
| 版本說明 REVISION NOTE         |                               |                                                                             | 圖號<br>DWG NO. 3002273900                |
|                            |                               |                                                                             | 單位 UNIT<br>mm                           |
|                            |                               |                                                                             | 比例 SCALE<br>3/1                         |
|                            |                               |                                                                             | 張數 SHEET<br>1/1                         |
|                            |                               |                                                                             | 版本 REV.<br>A                            |

